

Natural changes of population 1961 – 2022

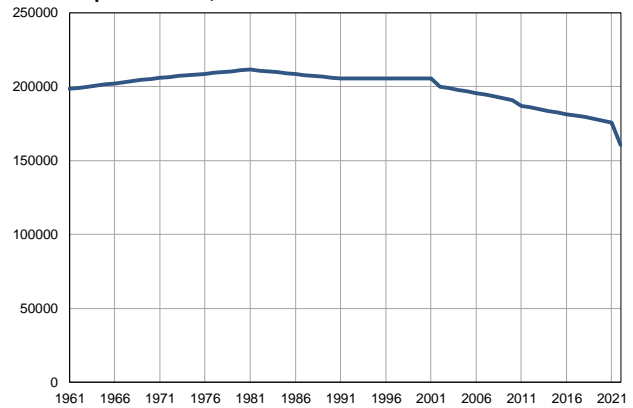
Profile
July 2023

North Bačka

	1961	2022
Population size	198392	160506
Livebirths, Number	3026	1445
Deaths, Number	2045	2722
Natural increase, Number	981	-1277
Infants deaths, Number	185	4
Livebirths, per 1,000 population	15	9
Deaths, per 1,000 population	10	17
Natural increase, per 1,000 population	5	-8
Infants deaths, per 1,000 livebirths	61	3

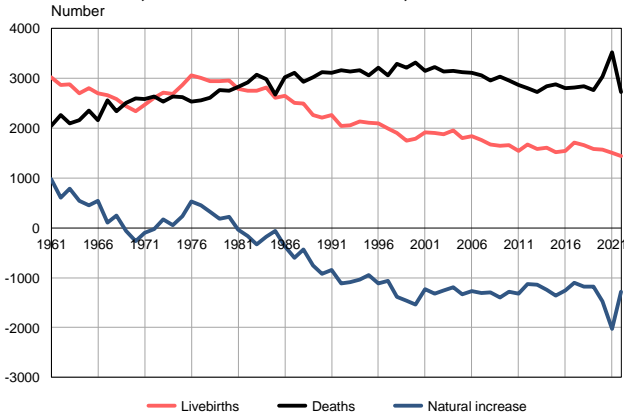
Source: Vital Statistics, SORS

Population size, 1961–2022



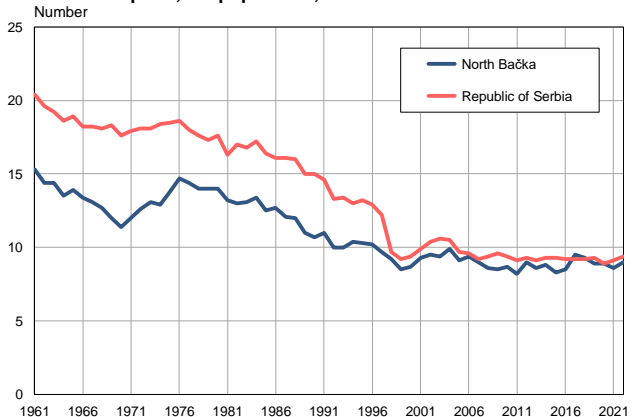
Source: Vital Statistics, SORS

Livebirths, deaths and natural increase, 1961–2022



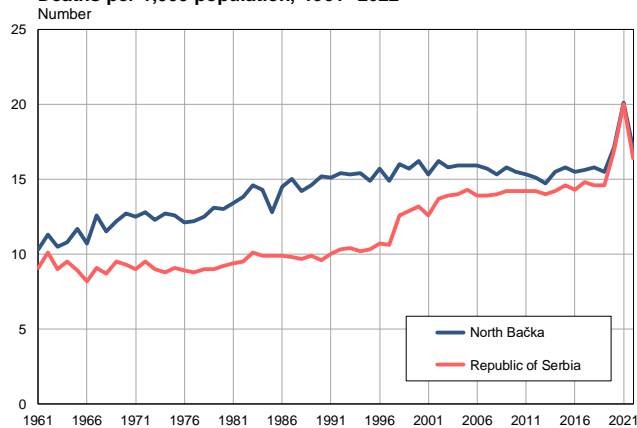
Source: Vital Statistics, SORS

Livebirths per 1,000 population, 1961–2022



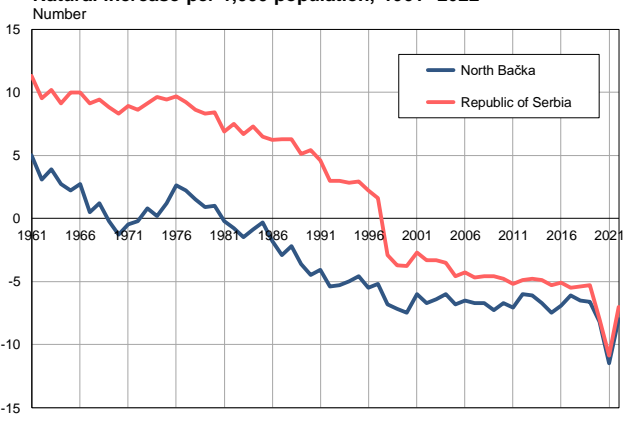
Source: Vital Statistics, SORS

Deaths per 1,000 population, 1961–2022



Source: Vital Statistics, SORS

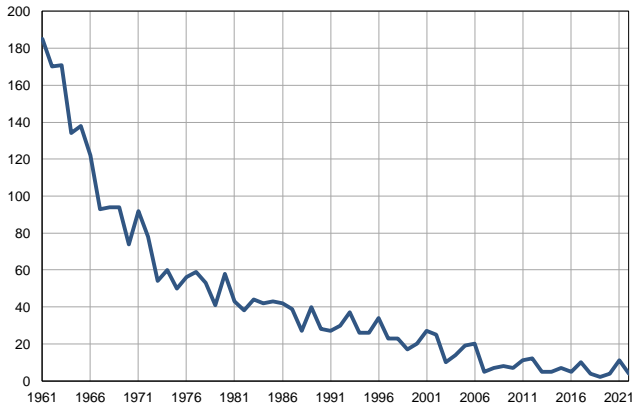
Natural increase per 1,000 population, 1961–2022



Source: Vital Statistics, SORS

Infants deaths, 1961–2022

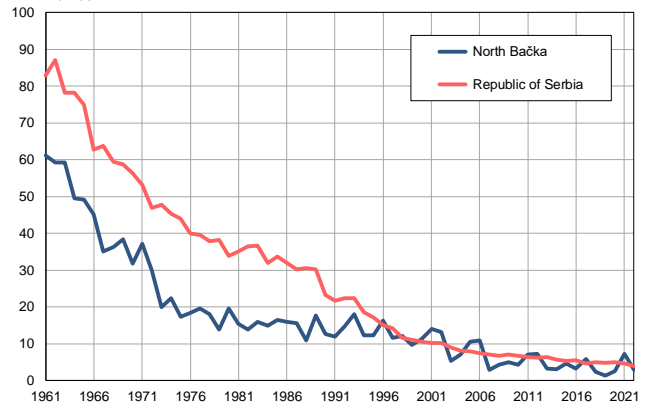
Number



Source: Vital Statistics, SORS

Infants deaths per 1,000 livebirths, 1961–2022

Number



Source: Vital Statistics, SORS

Table. Natural changes of population, North Bačka

Year	Number of population	Livebirths	Deaths	Natural increase	Infants deaths	per 1000 population			Infant deaths per 1000 livebirths
						Livebirths	Deaths	Natural increase	
1961	198392	3026	2045	981	185	15.3	10.3	5.0	61.1
1962	199146	2866	2260	606	170	14.4	11.3	3.1	59.3
1963	199899	2885	2101	784	171	14.4	10.5	3.9	59.3
1964	200653	2703	2158	545	134	13.5	10.8	2.7	49.6
1965	201407	2803	2349	454	138	13.9	11.7	2.2	49.2
1966	202161	2706	2166	540	122	13.4	10.7	2.7	45.1
1967	202914	2657	2554	103	93	13.1	12.6	0.5	35.0
1968	203668	2586	2341	245	94	12.7	11.5	1.2	36.3
1969	204422	2446	2501	-55	94	12.0	12.2	-0.2	38.4
1970	205175	2335	2603	-268	74	11.4	12.7	-1.3	31.7
1971	205929	2475	2579	-104	92	12.0	12.5	-0.5	37.2
1972	206484	2612	2633	-21	78	12.6	12.8	-0.2	29.9
1973	207038	2709	2539	170	54	13.1	12.3	0.8	19.9
1974	207593	2686	2631	55	60	12.9	12.7	0.2	22.3
1975	208147	2867	2628	239	50	13.8	12.6	1.2	17.4
1976	208702	3063	2535	528	56	14.7	12.1	2.6	18.3
1977	209257	3008	2556	452	59	14.4	12.2	2.2	19.6
1978	209811	2940	2616	324	53	14.0	12.5	1.5	18.0
1979	210366	2944	2766	178	41	14.0	13.1	0.9	13.9
1980	210920	2962	2747	215	58	14.0	13.0	1.0	19.6
1981	211475	2786	2827	-41	43	13.2	13.4	-0.2	15.4
1982	210868	2750	2916	-166	38	13.0	13.8	-0.8	13.8
1983	210260	2749	3078	-329	44	13.1	14.6	-1.5	16.0
1984	209653	2813	2988	-175	42	13.4	14.3	-0.9	14.9
1985	209045	2615	2678	-63	43	12.5	12.8	-0.3	16.4
1986	208438	2645	3018	-373	42	12.7	14.5	-1.8	15.9
1987	207831	2505	3112	-607	39	12.1	15.0	-2.9	15.6
1988	207223	2497	2936	-439	27	12.0	14.2	-2.2	10.8
1989	206616	2267	3016	-749	40	11.0	14.6	-3.6	17.6
1990	206008	2208	3130	-922	28	10.7	15.2	-4.5	12.7
1991	205401	2261	3106	-845	27	11.0	15.1	-4.1	11.9
1992	205390	2044	3157	-1113	30	10.0	15.4	-5.4	14.7
1993	205379	2053	3143	-1090	37	10.0	15.3	-5.3	18.0
1994	205368	2132	3163	-1031	26	10.4	15.4	-5.0	12.2
1995	205357	2113	3056	-943	26	10.3	14.9	-4.6	12.3
1996	205346	2100	3220	-1120	34	10.2	15.7	-5.5	16.2
1997	205334	1993	3062	-1069	23	9.7	14.9	-5.2	11.5
1998	205323	1898	3287	-1389	23	9.2	16.0	-6.8	12.1
1999	205312	1753	3214	-1461	17	8.5	15.7	-7.2	9.7
2000	205301	1786	3318	-1532	20	8.7	16.2	-7.5	11.2
2001	205290	1913	3147	-1234	27	9.3	15.3	-6.0	14.1
2002	199999	1904	3230	-1326	25	9.5	16.2	-6.7	13.1
2003	198926	1879	3139	-1260	10	9.4	15.8	-6.4	5.3
2004	197919	1961	3150	-1189	14	9.9	15.9	-6.0	7.1
2005	196843	1801	3128	-1327	19	9.1	15.9	-6.8	10.5

Table. Natural changes of population, North Bačka

Year	Number of population	Livebirths	Deaths	Natural increase	Infants deaths	per 1000 population			Infant deaths per 1000 livebirths
						Livebirths	Deaths	Natural increase	
2006	195731	1840	3106	-1266	20	9.4	15.9	-6.5	10.9
2007	194573	1756	3064	-1308	5	9.0	15.7	-6.7	2.8
2008	193329	1668	2962	-1294	7	8.6	15.3	-6.7	4.2
2009	192118	1641	3032	-1391	8	8.5	15.8	-7.3	4.9
2010	190919	1666	2952	-1286	7	8.7	15.5	-6.7	4.2
2011	186985	1542	2866	-1324	11	8.2	15.3	-7.1	7.1
2012	185822	1676	2797	-1121	12	9.0	15.1	-6.0	7.2
2013	184756	1585	2720	-1135	5	8.6	14.7	-6.1	3.2
2014	183622	1609	2846	-1237	5	8.8	15.5	-6.7	3.1
2015	182470	1519	2880	-1361	7	8.3	15.8	-7.5	4.6
2016	181334	1544	2803	-1259	5	8.5	15.5	-6.9	3.2
2017	180349	1709	2810	-1101	10	9.5	15.6	-6.1	5.9
2018	179380	1663	2836	-1173	4	9.3	15.8	-6.5	2.4
2019	178294	1586	2770	-1184	2	8.9	15.5	-6.6	1.3
2020	177044	1567	3036	-1469	4	8.9	17.1	-8.2	2.6
2021	175397	1505	3525	-2020	11	8.6	20.1	-11.5	7.3
2022	160506	1445	2722	-1277	4	9.0	17.0	-8.0	2.8

Source: Vital Statistics, SORS

Definitions

Population size

Number of population in the respective year. The data on the number of population in 1961, 1971, 1981 and 1991 are census data, while for the inter-census years the number of population was calculated as an average inter-census difference. From 2002 are given the population estimates that were calculated according to the census of population results and the annual statistics of natural mechanical population movements.

Livebirths

Absolute number of live births in the course of a year. Live born child means a child giving vital signs after birth (breathing, i.e. heartbeat), even for the shortest time, regardless the mother's pregnancy duration.

Deaths

Absolute number of deaths in the course of a year. Deceased is a person that whenever after having been born live, shows permanently stopped vital signs.

Natural increase

Natural population increase is the number of live births minus the number of deaths.

Infants deaths

Absolute number of infants deaths in the course of a year. Deceased infant is a child that after having been born live and before aged one year, shows permanently stopped vital signs.

Livebirths, per 1 000 population

Livebirths rate is the ratio of the number of live births and the population size in the respective year. The number of live births is divided by the population size and then multiplied by 1000.

Deaths, per 1 000 population

General mortality rate represents the ratio between the number of deaths and the population size in the respective year. The number of deaths is divided by population size and then multiplied by 1000.

Natural increase, per 1 000 population

Natural population increase rate is the difference between the number of live births and the number of deaths, in relation to the population size in the respective year.

Natural population increase rate = (number of live births - number of deaths) / population size * 1000

Infants deaths, per 1 000 livebirths

Infant mortality rate is the ratio of deceased children under 1 year of age and live births in the respective year. The mortality rate is expressed per 1000 live births.

Infant mortality rate = (number of deceased children under 1 year of age / number of live births) * 1000

Additional info:



Download all database data in Excel format:

[Data](#)



DevInfo profiles:

devinfo.stat.gov.rs/SerbiaProfileLauncher/?lang=en



DevInfo online database:

devinfo.stat.gov.rs/vitalna



For additional information or questions please contact:

devinfo@stat.gov.rs